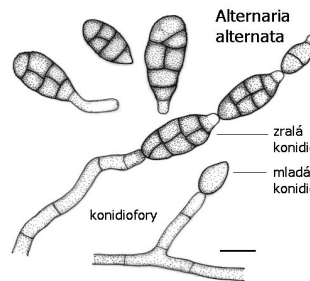


# IAQ MOLD QUICK REFERENCE

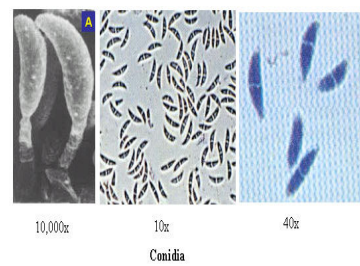
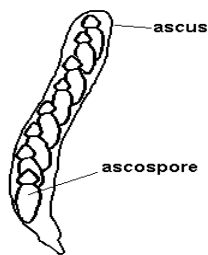
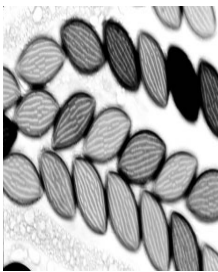
## Acremonium sp.



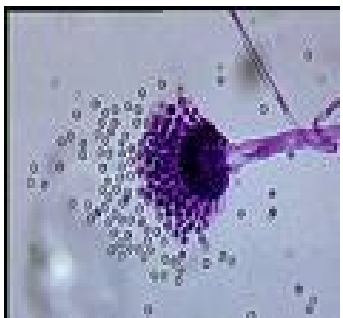
## Alternaria sp.



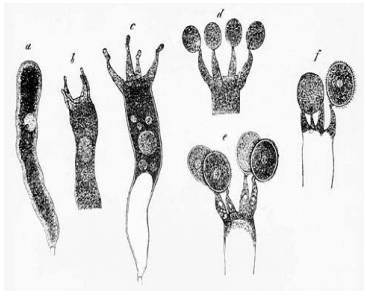
## Ascospores



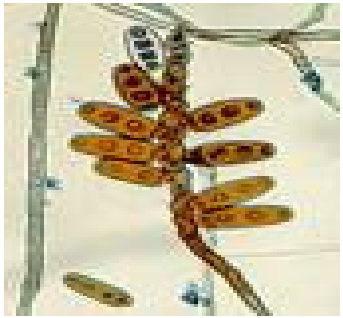
# Aspergillus sp.



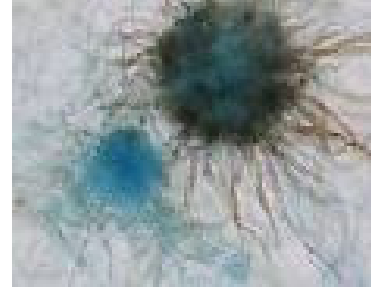
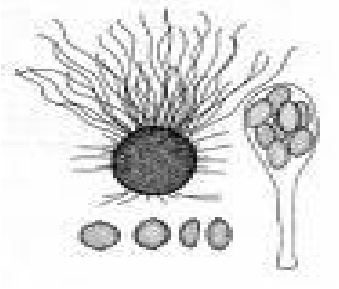
# Basidiospores



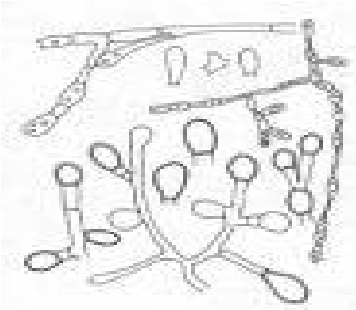
# Bipolaris/Drechslera



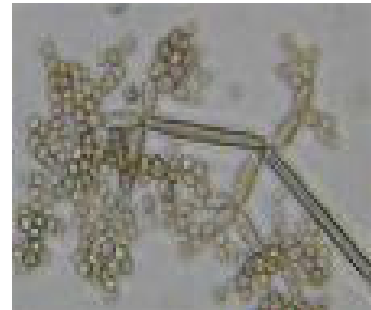
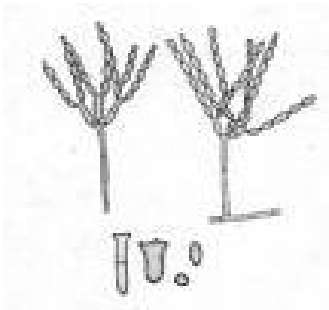
## Chaetomium sp.



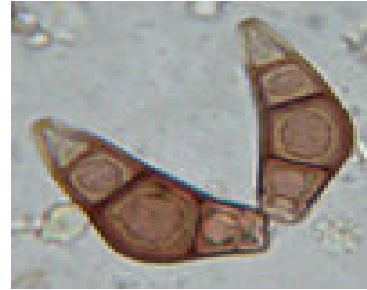
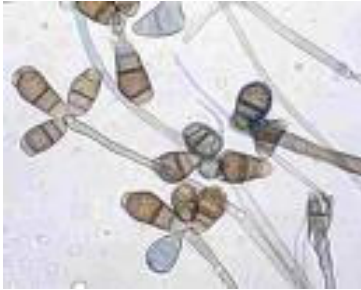
## Chrysosporium sp.



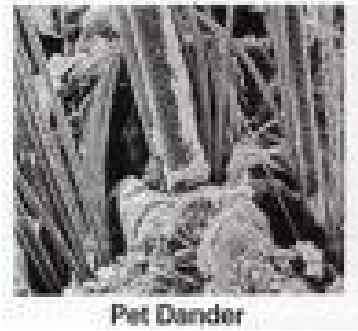
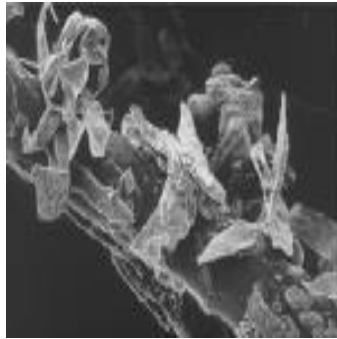
## Cladosporium sp.



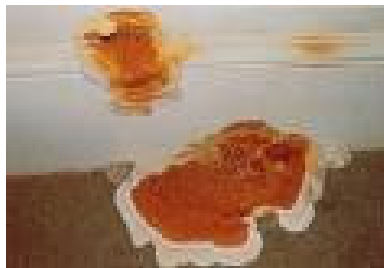
## Curvularia sp.



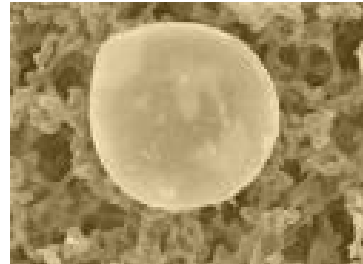
## Dander



## Dry Rot



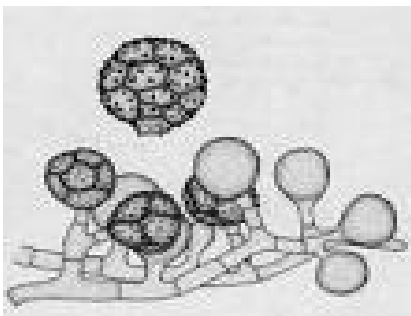
## Dust



## Dust mites



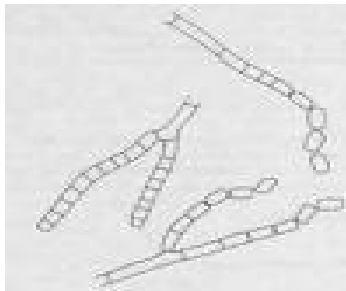
## Epicoccum sp.



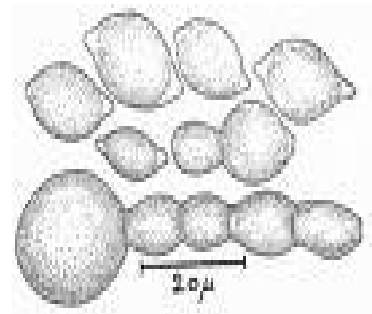
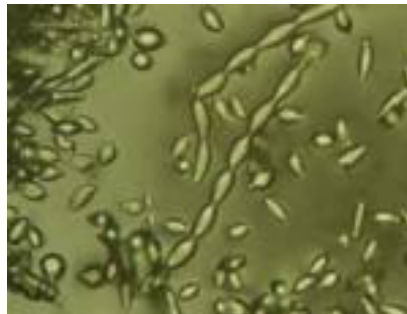
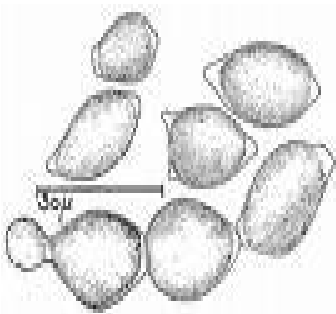
## Fusarium sp.



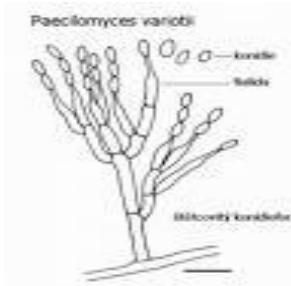
## Geotrichum sp.



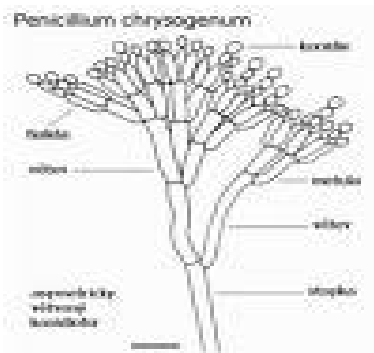
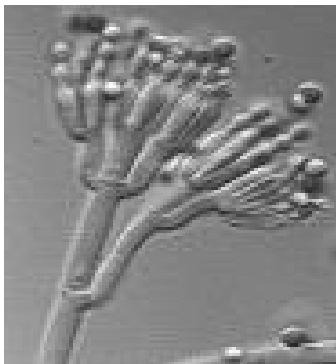
## Monilia



## Paecilomyces sp.



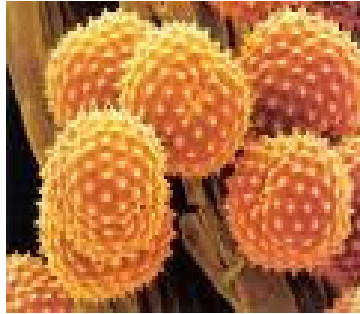
## Penicillium sp.



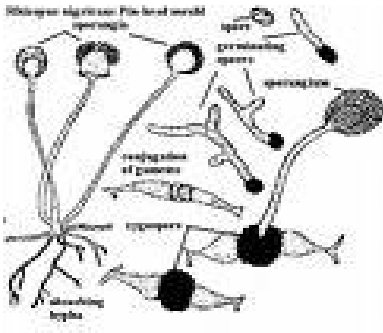
## Pithomyces



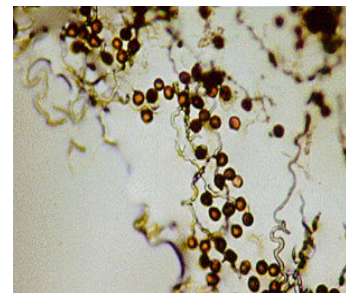
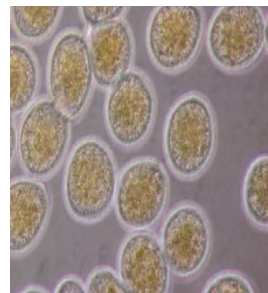
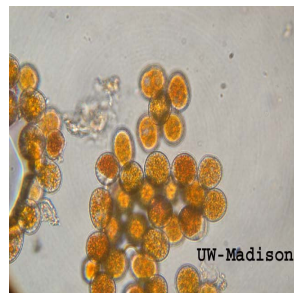
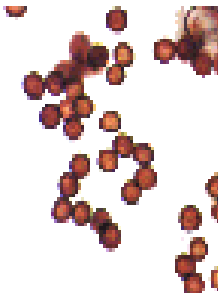
# Pollen



# Rhizopus sp.

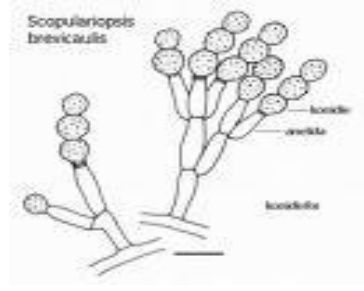
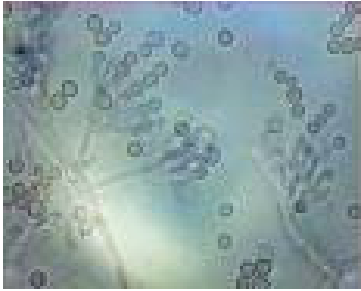


# Rusts / Smuts

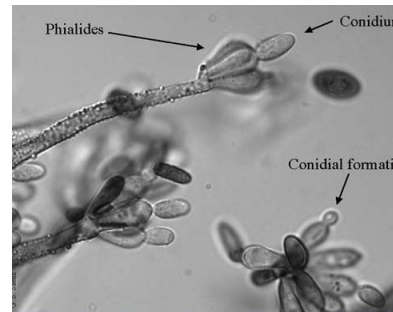
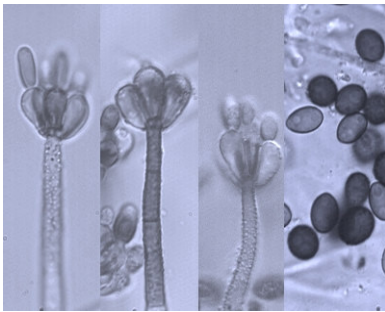




# Scopulariopsis



# Stachybotrys sp.



# Syncephalstrum sp.



## Trichoderma sp.



## Yeast

